A green rectangular sign with white text is mounted on a brick wall. The text reads "Gladstone Water Treatment Plant" in a large serif font, and "Public Entrance" in a smaller serif font below it. A faint circular seal is visible in the background of the sign.

Gladstone Water Treatment Plant

Public Entrance

A photograph of the Gladstone Water Treatment Plant. The building is a two-story structure made of light-colored brick or concrete blocks. It has a prominent square tower on the roof with a white pipe extending from it. The building is situated on a grassy hill. In the foreground, there is a paved parking lot with a few vehicles, including a brown pickup truck and a motorcycle. A hand is visible in the bottom right corner, pointing towards the building.

Constructed in 1968 and expanded to 7.5 mgd in 1975,
Gladstone's water plant removes iron and softens well water.

Gladstone has six, 95' deep wells drilled into the alluvium of the Missouri River flood plain.

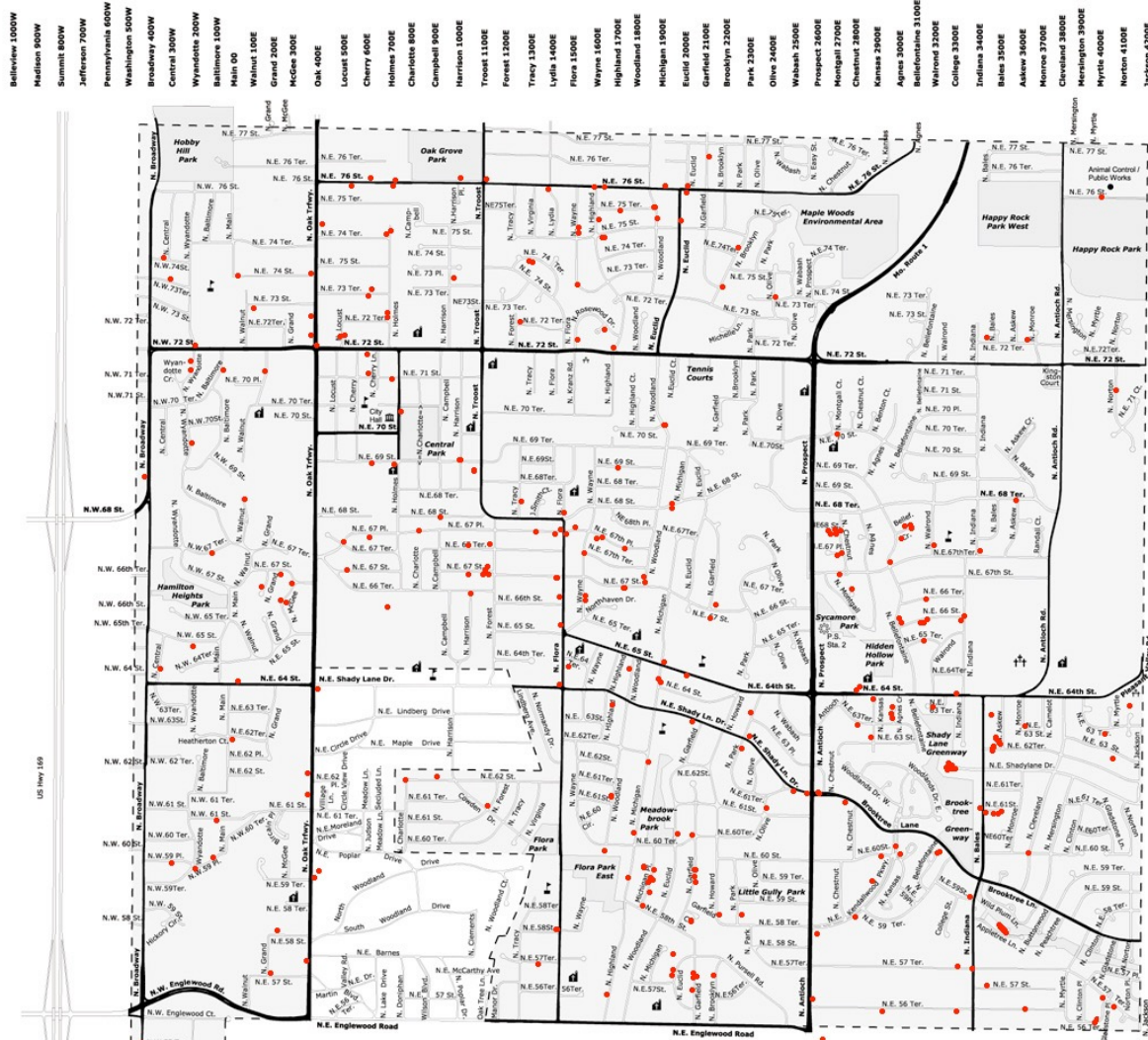


Starting Location



Gladstone Water Plant

High above Highway 169,
the Gladstone plant is virtually
invisible from the surrounding
neighborhood.

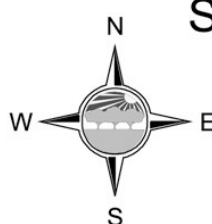


Distribution System Mapping of Main Breaks

2002

Gladstone, Missouri

Streets & Thoroughfares



- School
- Church
- Cemetery

0 0.25 0.5 0.75 1 Miles

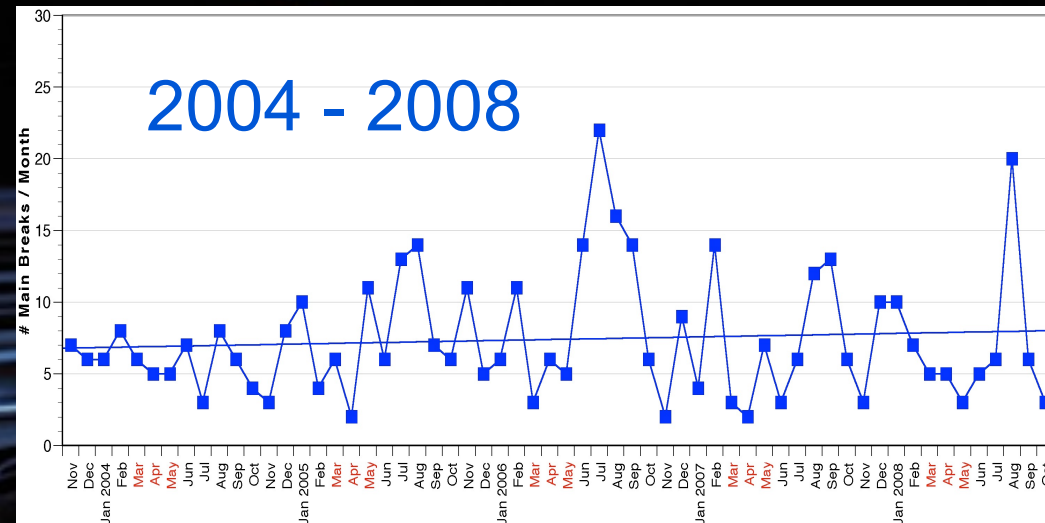
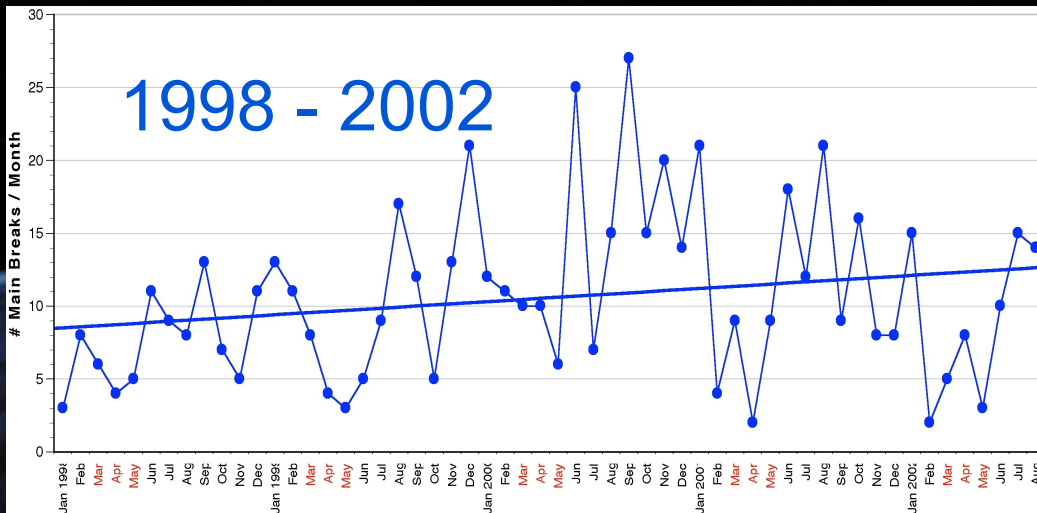
WTP

H₂O'C
ENGINEERING

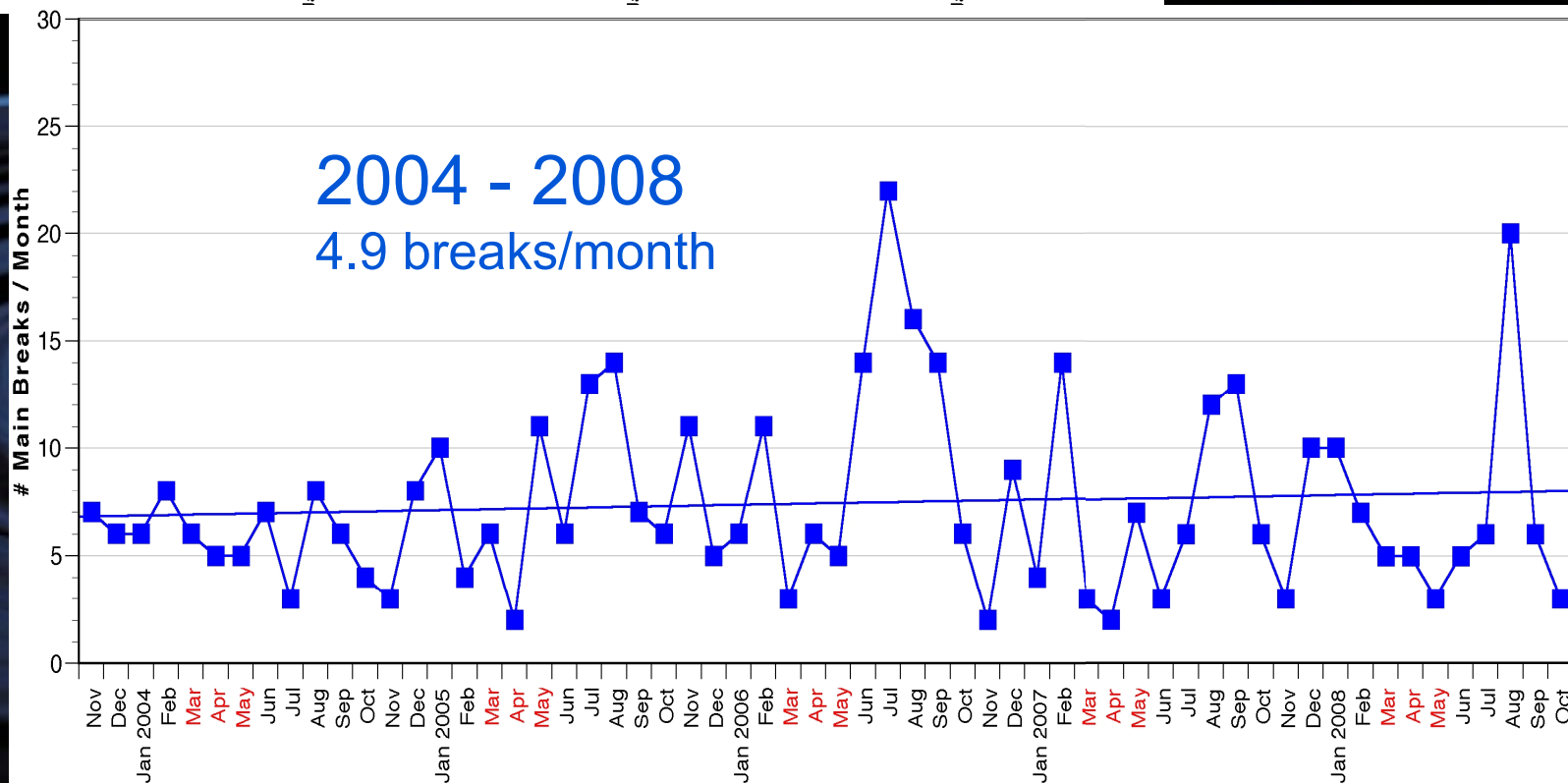
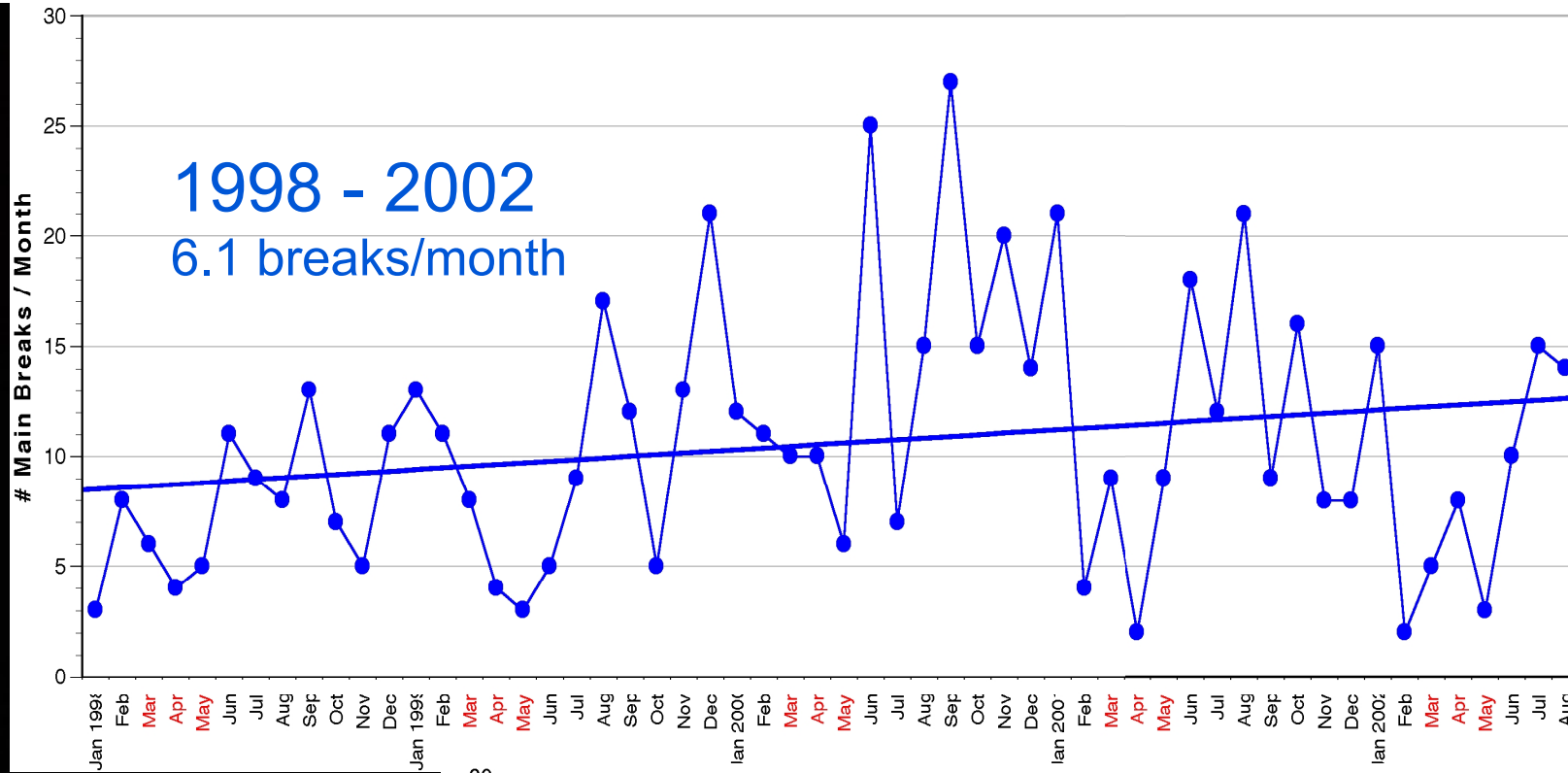
Gladstone, MO

Reduction in Main Breaks

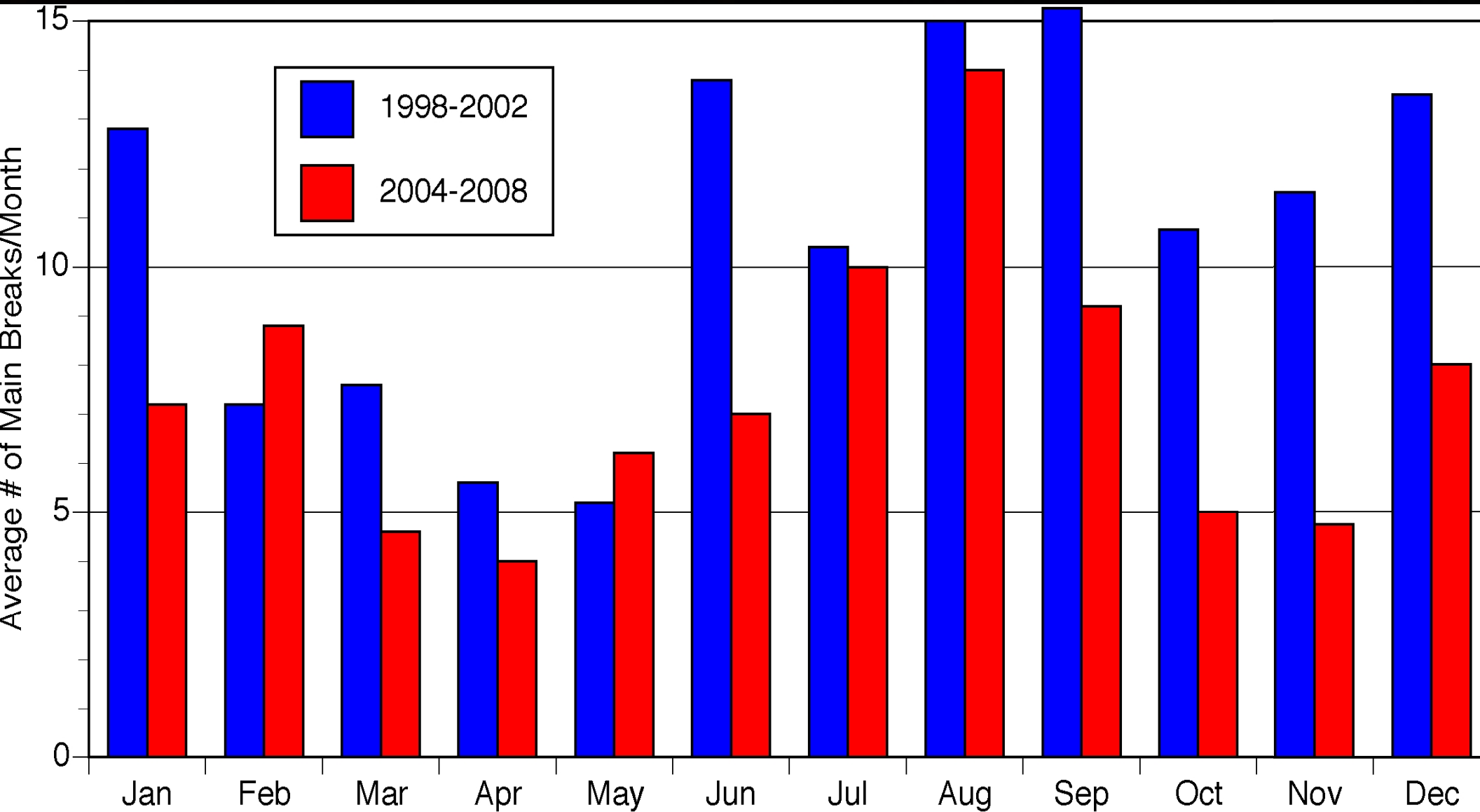
1998 - 2008



H₂O'C
ENGINEERING



Most Main Breaks: July - September



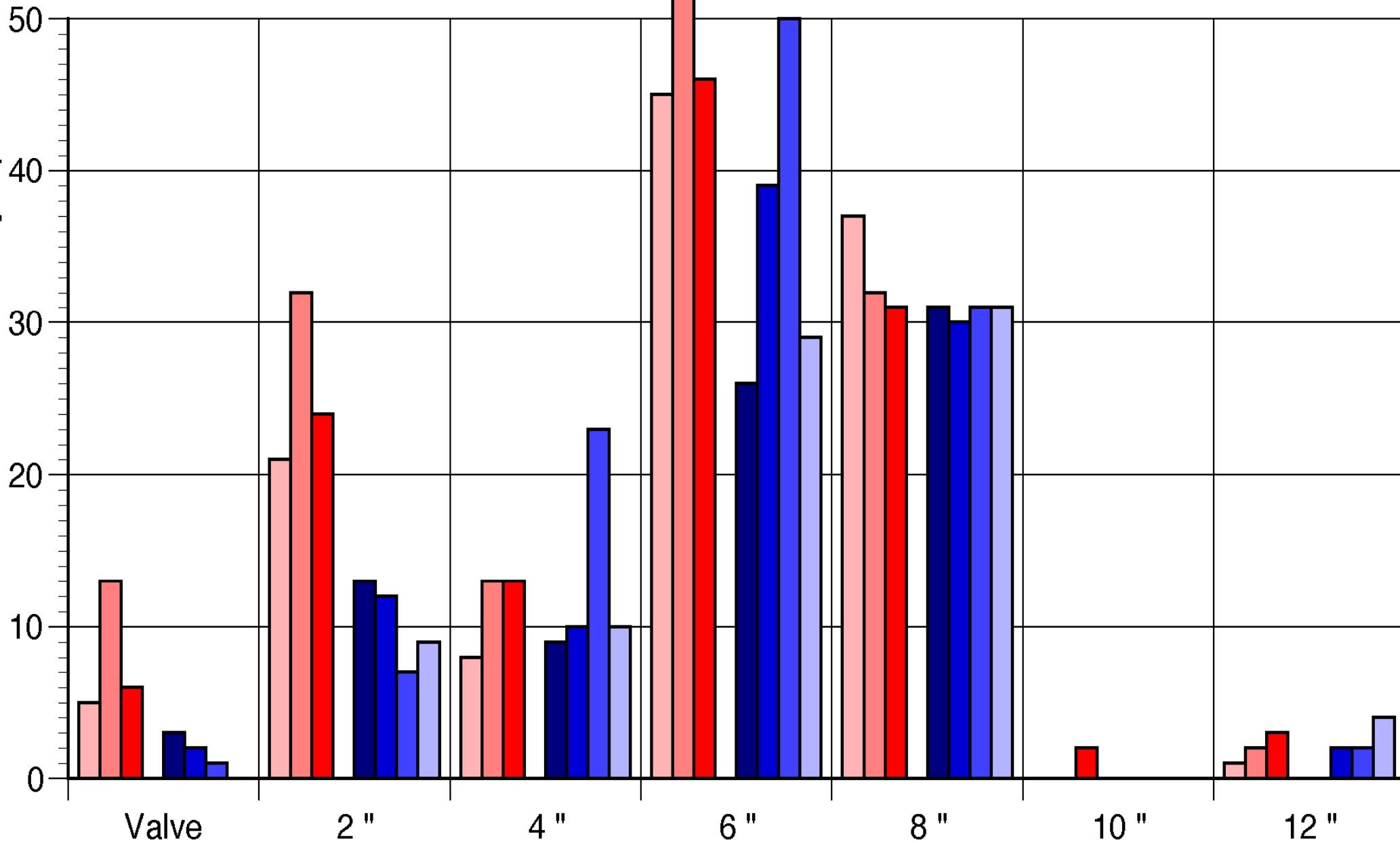
Fewest Main Breaks: March - May

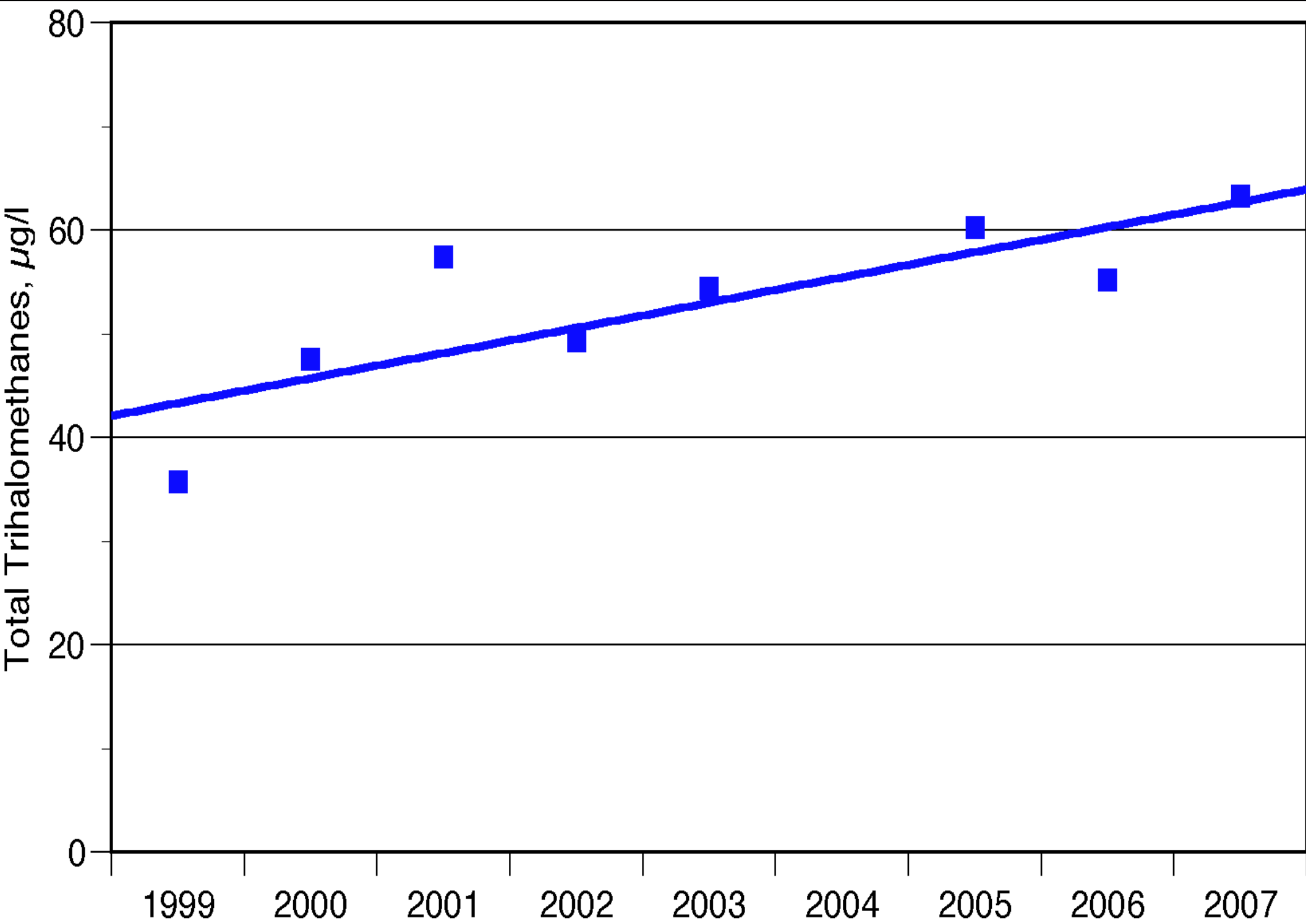
Gladstone, Missouri

1999-2001 2004-2007

Most breaks are in smaller pipe

Number of Main Breaks / Year - by Pipe Size

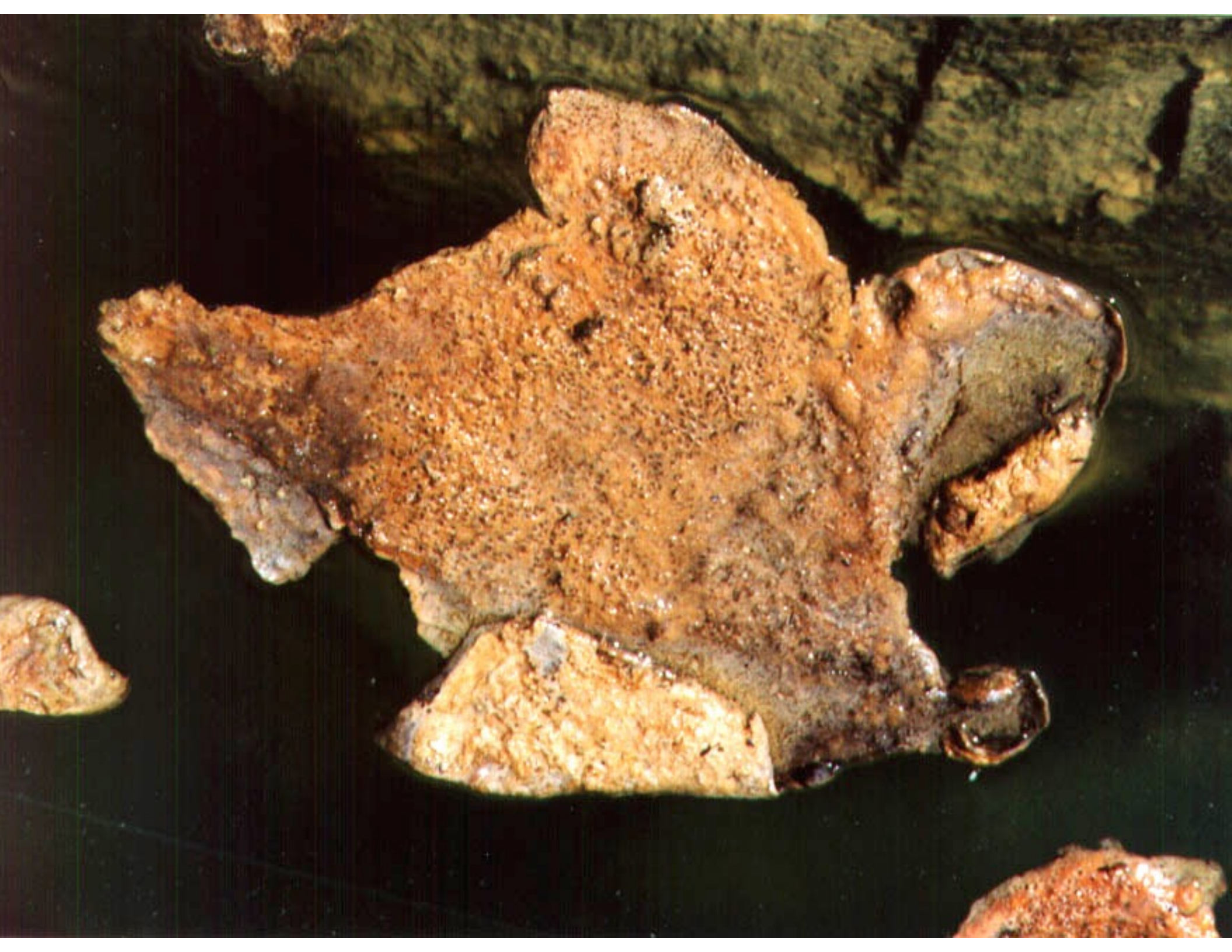






Gladstone, MO

**Control of
Algal Growths
in Lime
Softening
Tanks**

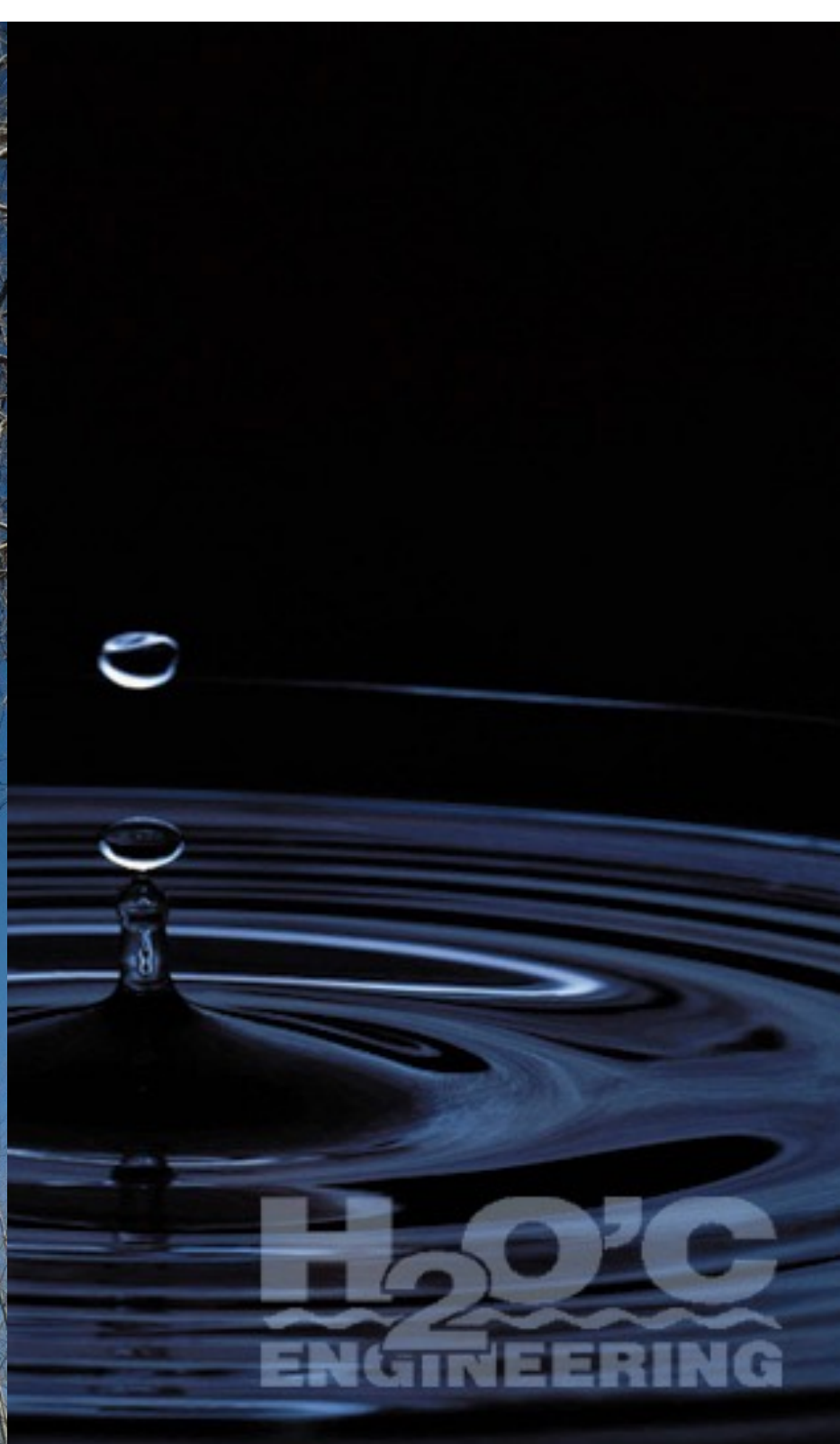


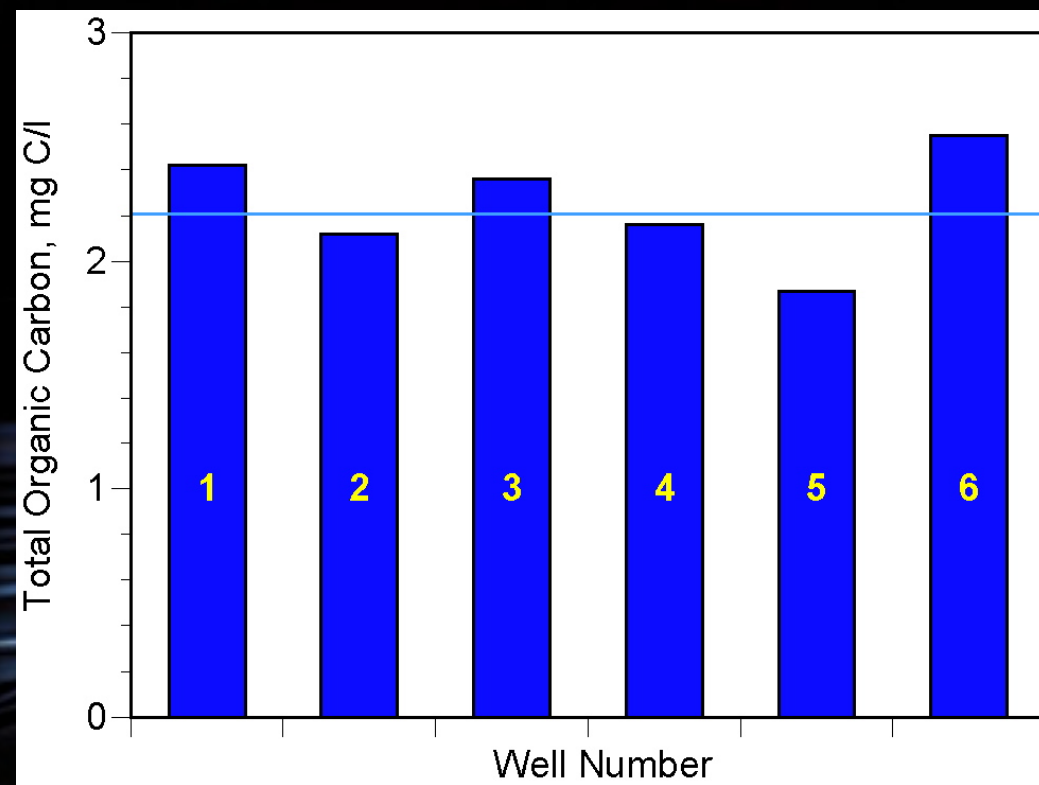
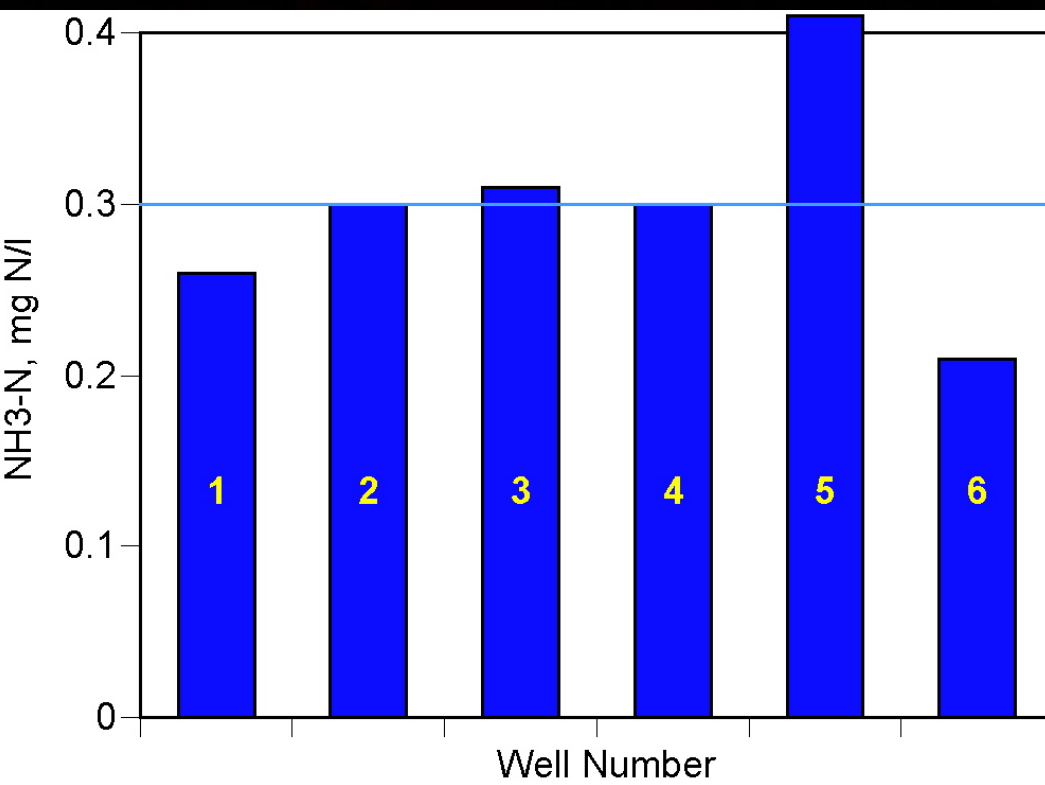
A microscopic image showing a dense network of thin, brownish-orange filamentous structures, likely algae, intertwined with green, granular material. The background is dark, making the filaments stand out. The text is overlaid in blue with a white outline.

Gladstone, MO

**Filamentous Algae
and Calcium Carbonate**

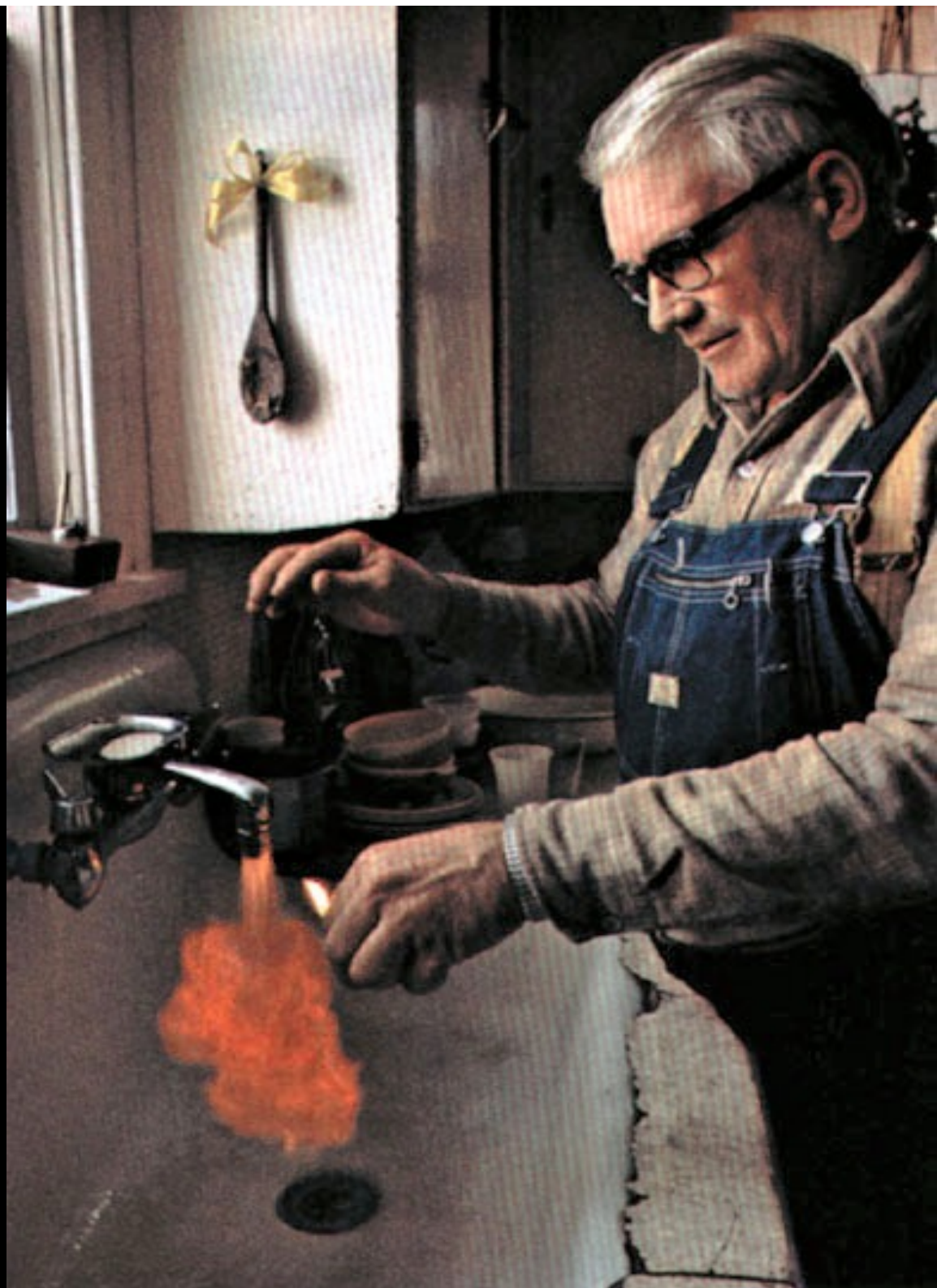






Normal, IL
Morton, IL

Methane
Removal
from
Groundwater









H₂O'C
ENGINEERING







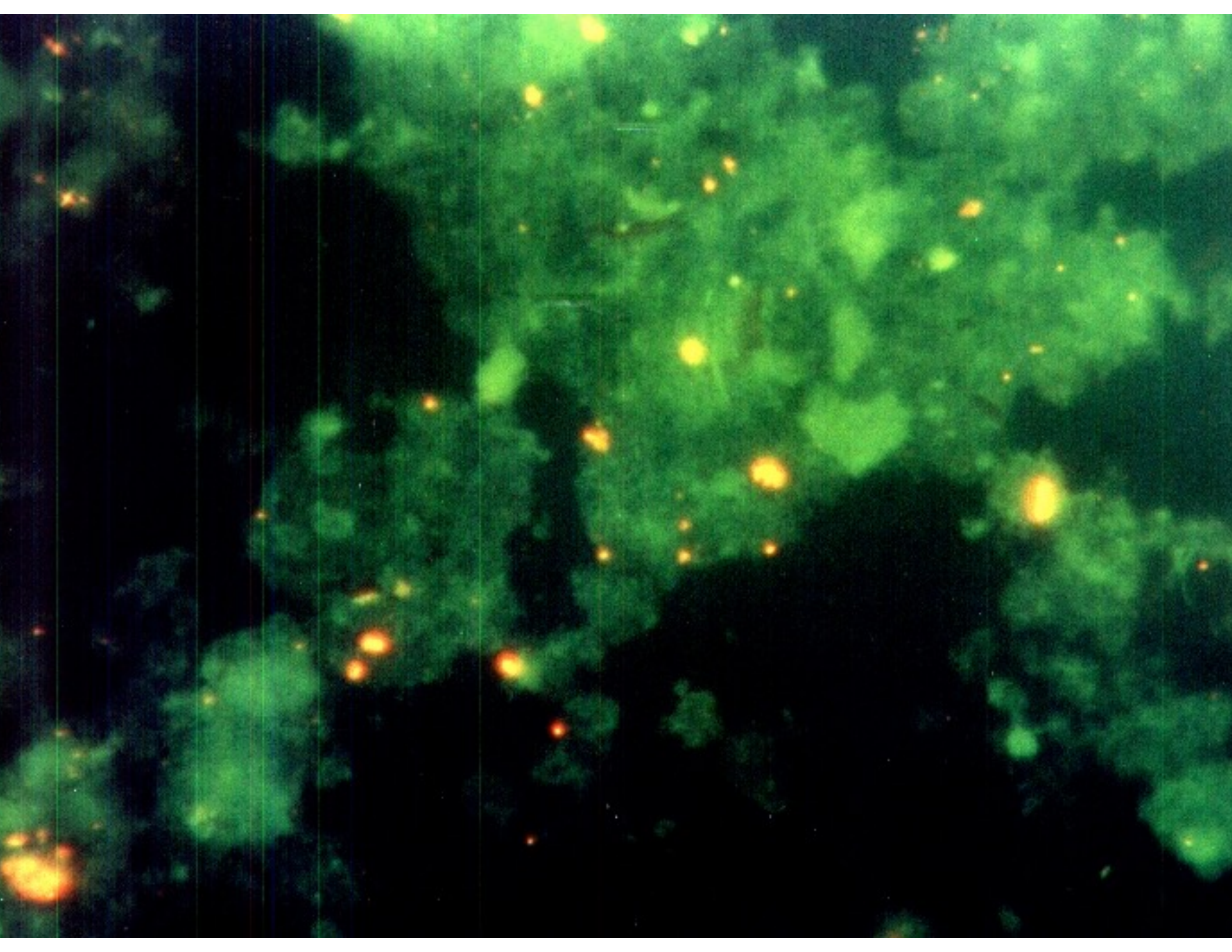












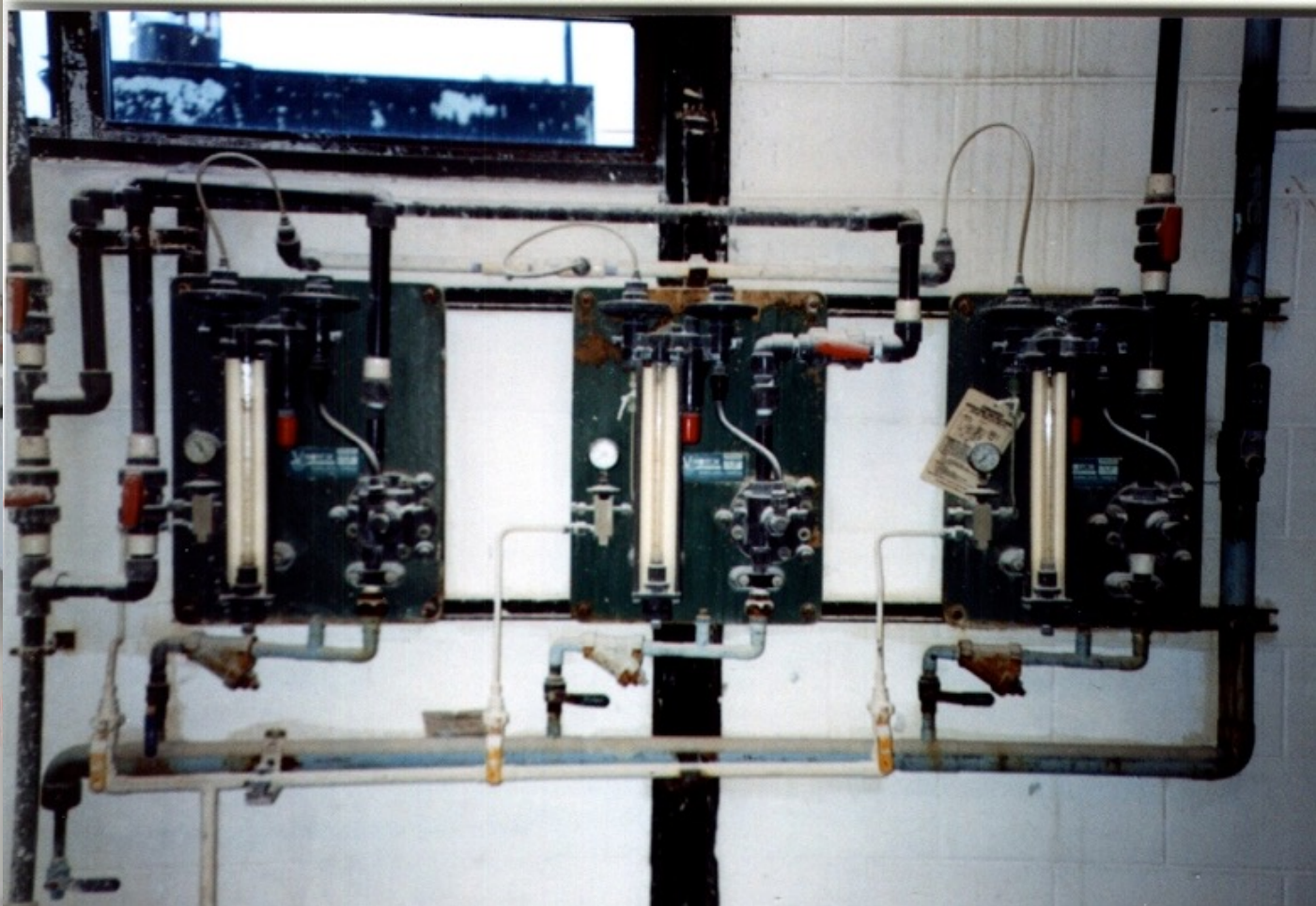




H₂O'C
ENGINEERING





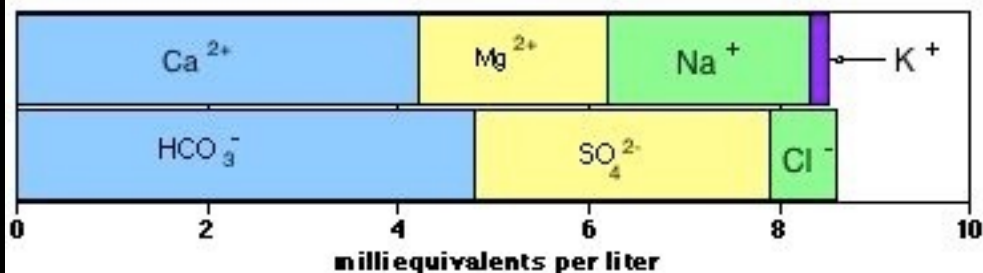




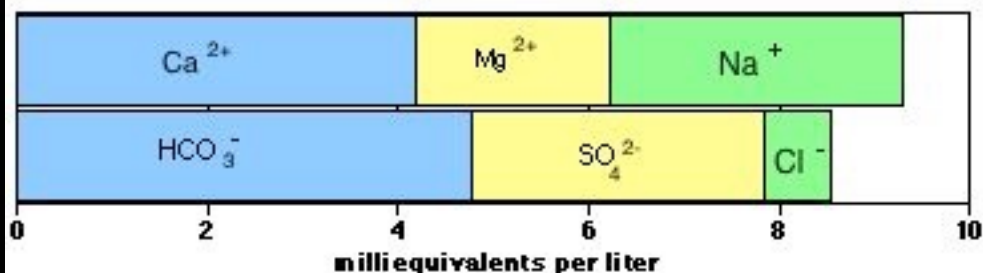




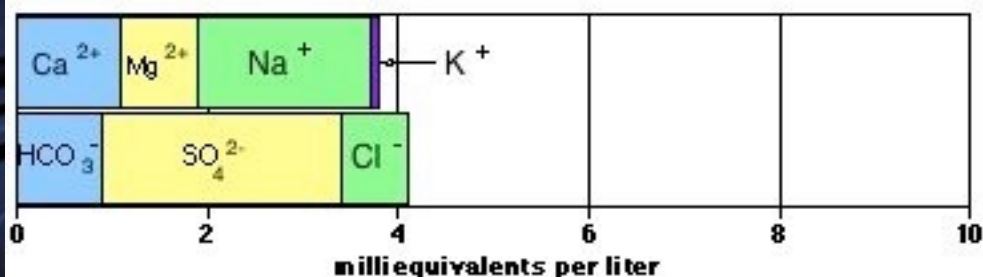
Gladstone, MO - Well Water



Kansas City, MO - Well Water



Gladstone, MO - Finished Water



Kansas City, MO - Finished Water

