

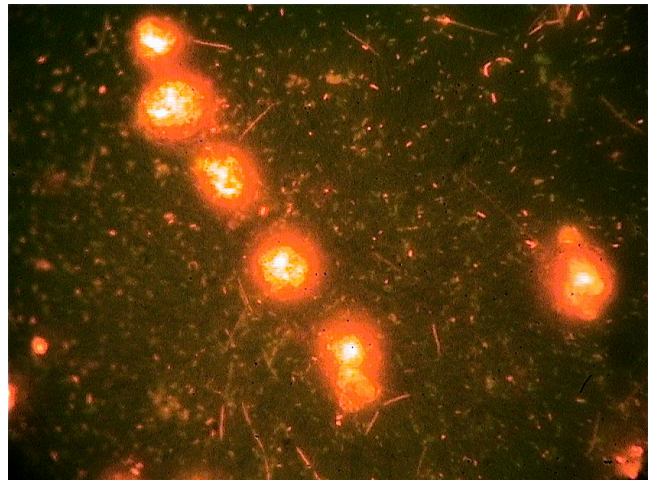
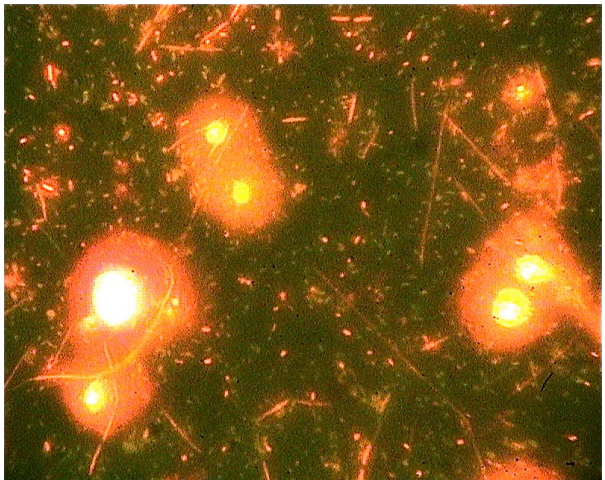
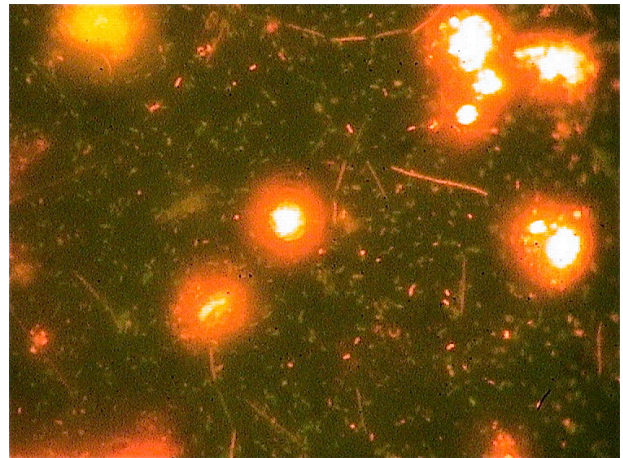
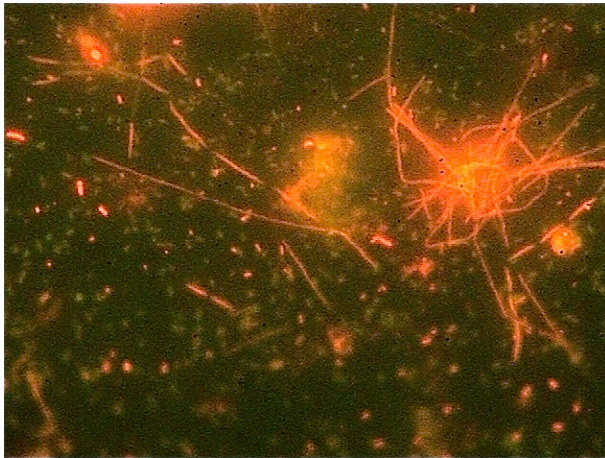
Microscopic Examination of Primary Settling Tank Effluent

Cameron, Missouri

March 16, 2009

A sample of primary basin sludge was taken for microscopic examination on March 16, 2009. After settling, the clarified supernatant was examined under ultraviolet epifluorescence microscopy.

The following micrographs, taken at a magnification of 1,000x, are typical of the those observed. Numerous planktonic bacteria and bacterial filaments were present in the supernatant along with clusters of brightly-fluorescing organisms. It is thought that the



application of the cationic polyelectrolyte resulted in the aggregation of the organisms.